



AFFIX WINDOWS

FlushSash

Authentic timber windows lovingly recreated in PVC-U



traditional styling modern performance

History and Heritage

...without the hassle

The FlushSash system is crafted from modern, weatherproof PVC-U, which - unlike traditional timber windows - will never need sanding or repainting and will never rot, split or swell. These low-maintenance windows will keep your home looking its best for years to come, with no more work than an occasional wipe with a damp cloth.

FlushSash can be specified in bespoke sizes to suit the windows of your home, whether it's a tall townhouse or a quaint and cosy cottage. Georgian bar detailing can also be fitted within your windows to give the 'lattice' effect often found in historic homes.

Heritage houses can often be associated with damp and draughty living conditions due to ill-fitting windows, or ineffective single glazing. Choosing the **FlushSash** for your home can solve these problems and more. Energy-efficient, high-spec PVC-U frames and double or triple glazing will keep your home significantly warmer and could dramatically lower your heating bills. These features also prevent condensation forming and will significantly reduce unwanted outdoor noise.





FlushSash

Elegantly

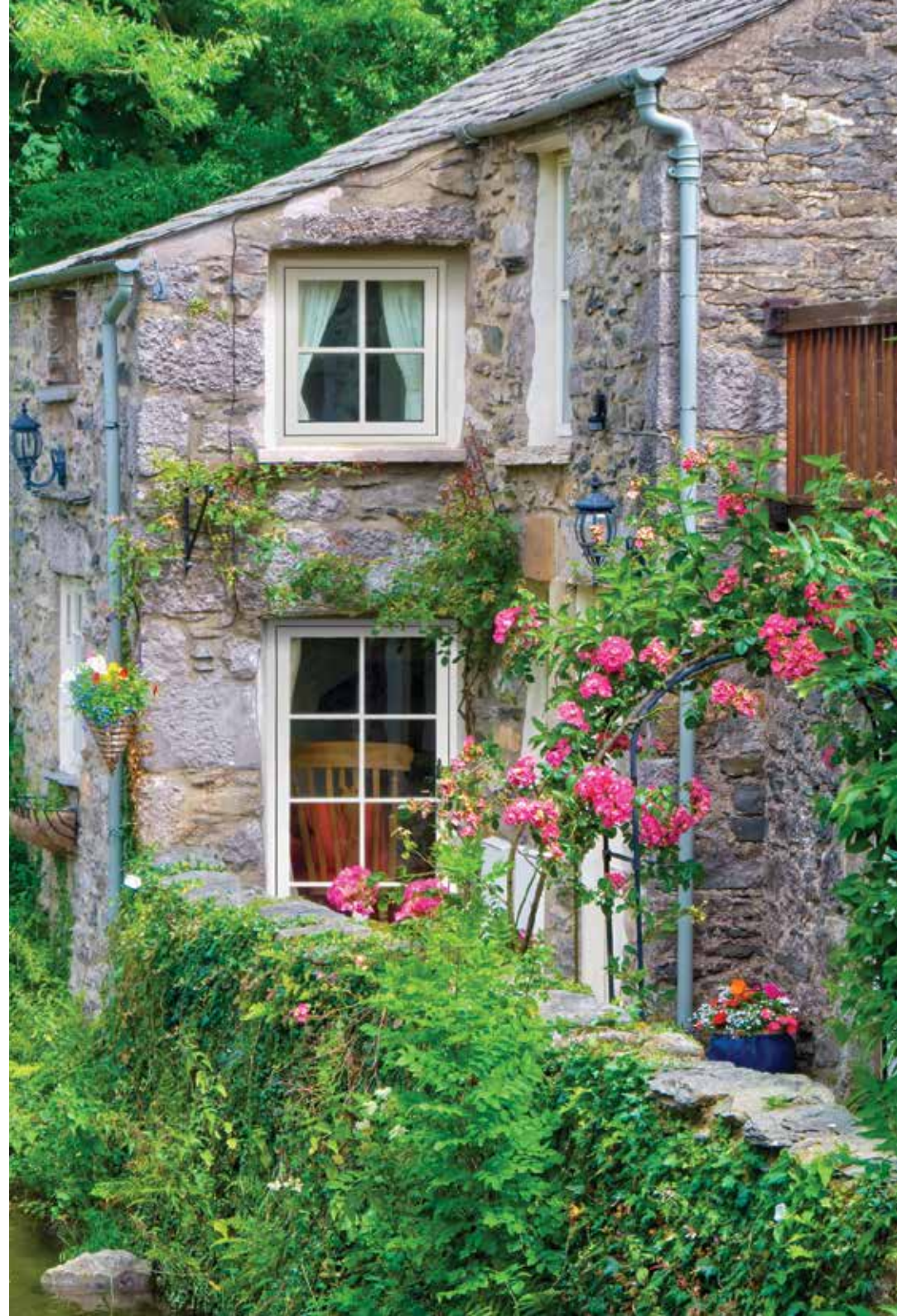
authentic style

The newly unveiled FlushSash window is reminiscent of early 19th Century timber windows and is ideal for heritage homes, particularly in conservation areas where authentic looks are all-important.

The **FlushSash** is the latest innovation to come from one of the UK's leading PVC-U systems suppliers.

Unlike chamfered and sculptured styles which are designed to add contour and detail to your windows, the **FlushSash** sits flush within the frame and offers traditional, understated elegance.

However traditional this window may look, it offers deceptively modern performance. Your home will be a haven of warmth and quiet, thanks to the thermal and acoustic insulation of the **FlushSash**. It has a multiple-chamber internal construction for increased energy efficiency.



Efficient

with energy

With the FlushSash you will no longer need to worry about the draughts and damp that are traditionally associated with period properties. Perfect for heritage applications, your home could be a warm and quiet haven if you choose to replace your old weather-worn windows with the elegant, energy-efficient FlushSash.

The multiple-chamber PVC-U frames of the FlushSash, with double or triple glazing, will ensure your home is extremely weatherproof and draughtproof, providing an outstanding thermal barrier against driving winds and rain, even in the most exposed locations.



Indicative U value achieved using a 36mm triple glazed unit - delivering high energy efficiency and big savings on energy bills.



FlushSash delivers outstanding weather resistance and performance.



FlushSash delivers energy efficient A-rated frames with an indicative WER rating of A+17 using a 36mm triple glazed unit.



FlushSash

Safety

and security

Your windows shouldn't just look the part, they should provide the highest standards of security to keep your family, home and belongings safe. With the FlushSash, you don't have to choose between style and security.

Thanks to the system's clever design, it seamlessly combines timeless elegance with a range of robust security features.

Every window offers multipoint locking and features industry-leading hardware in the form of stylish key-locking handles. The multi-chamber construction of the window frames ensures impressive structural strength.

The **FlushSash** system meets or exceeds all British Standards and holds relevant accreditations for all aspects of security and weatherproofing.

The PVC-U profile used to create these high spec windows has been independently assessed and has BS Kitemark and accreditation, it achieves PAS 24 for security and BS6375 wind and water testing.





Outstanding security features come as standard with **FlushSash**, with a performance to BS Security enhancement standards.



Let your home be as
Individual
 as you are

The FlushSash is available in 29 colours to perfectly personalise your property. Each colour and woodgrain has been designed to look just like traditional stained or painted timber and will require little or no maintenance other than an occasional wipe with a damp cloth.

You can also choose different finishes for the inside and outside of your property.

For example, you might choose a warm timber effect for the outside, such as 'Irish Oak', and opt for clean, bright White for the interior. You might even decide to specify a particular colour to match your kitchen - just speak to your installer about all the possible options.



Pick a colour

FlushSash frames come in a range of 29 colour options designed to look like stained or painted wood.





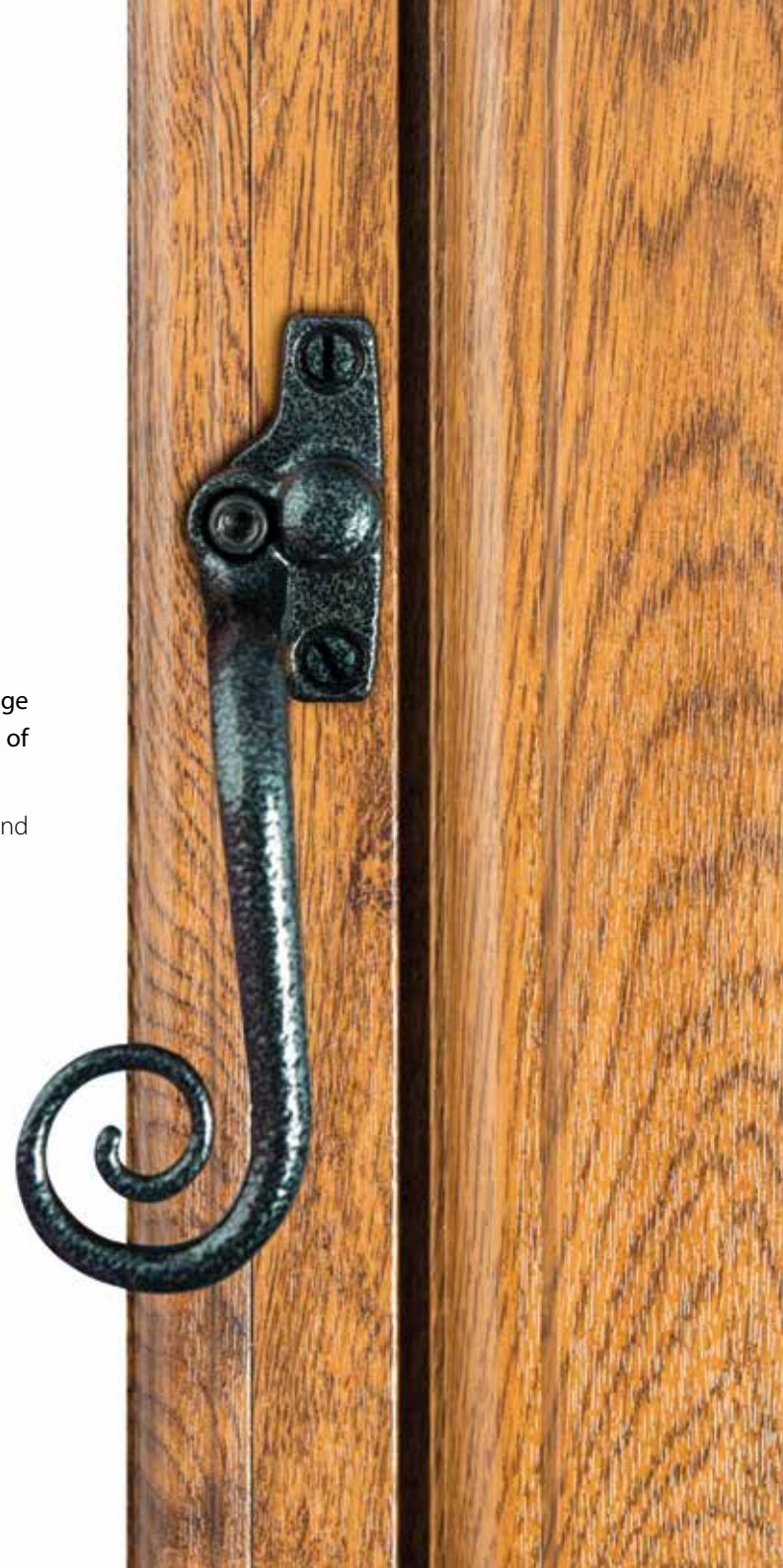
Heritage Hardware

You can personalise your beautifully-designed FlushSash windows with a choice of heritage details. Choose decorative 'monkey tail' handles and ornamental peg stays to give the feel of a genuine traditional timber window.

These optional finishing features will give your home's interior as much historic style and authenticity as its exterior.

Speak to a member of our friendly team to discuss the many options available for your home. We can help add character and class to your property, while improving its energy efficiency.

There's no need to choose between style and function.





FlushSash

traditional styling modern performance

Affix Windows
226 Blackfen Road,
Sidcup,
Kent,
DA15 8PW
Tel: 020 8316 0197
Email: info@affixwindows.co.uk



AFFIX WINDOWS



A BRAND OF THE VEKA UK GROUP

Images are for illustration purpose only. We reserve the right to change product specification at any time.
Due to the limitations of the printing process we recommend that an accurate colour swatch is requested prior to ordering.
The company cannot accept any responsibility for colours or images shown in this brochure.
All information within this brochure is correct at time of going to print.